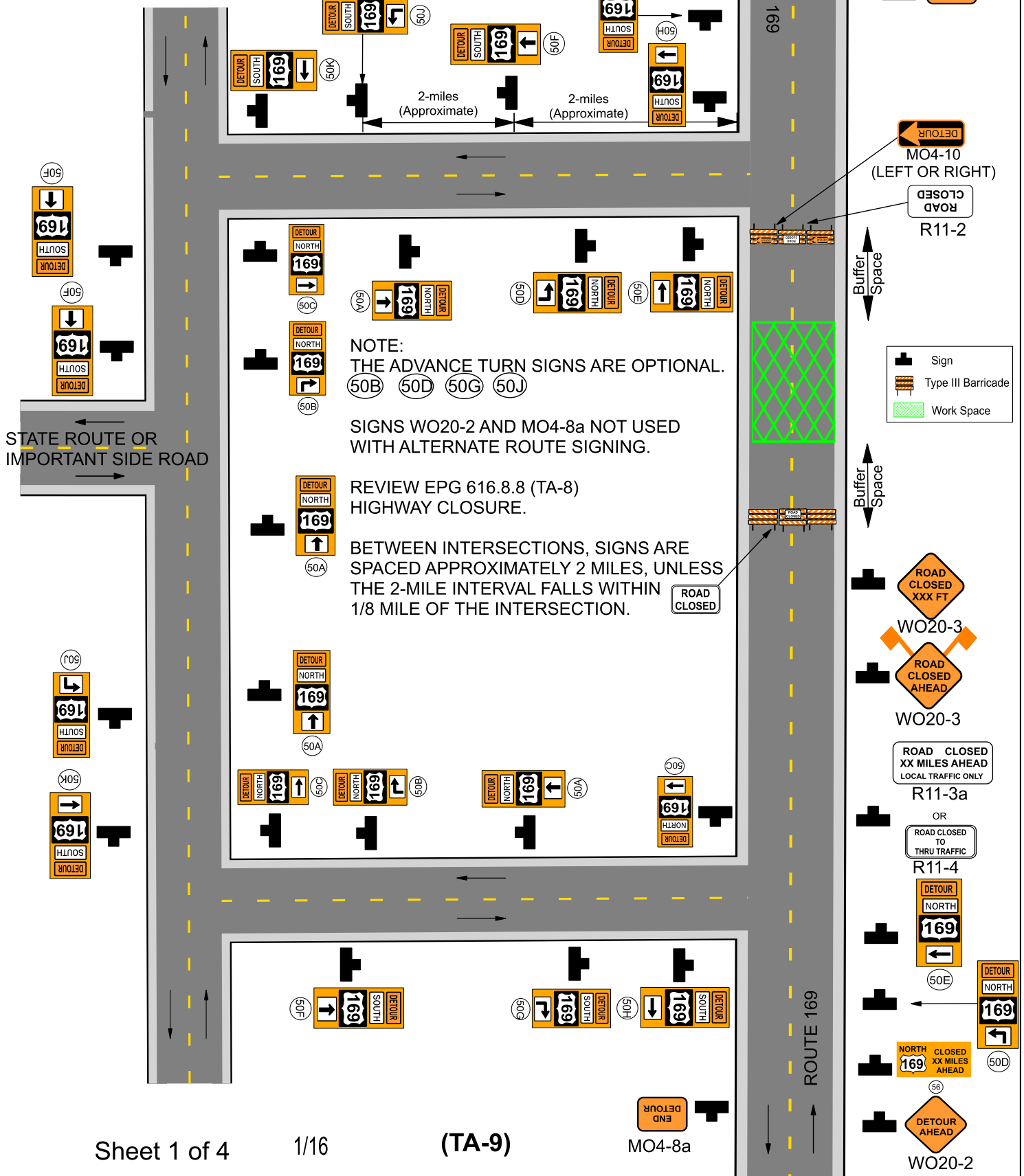
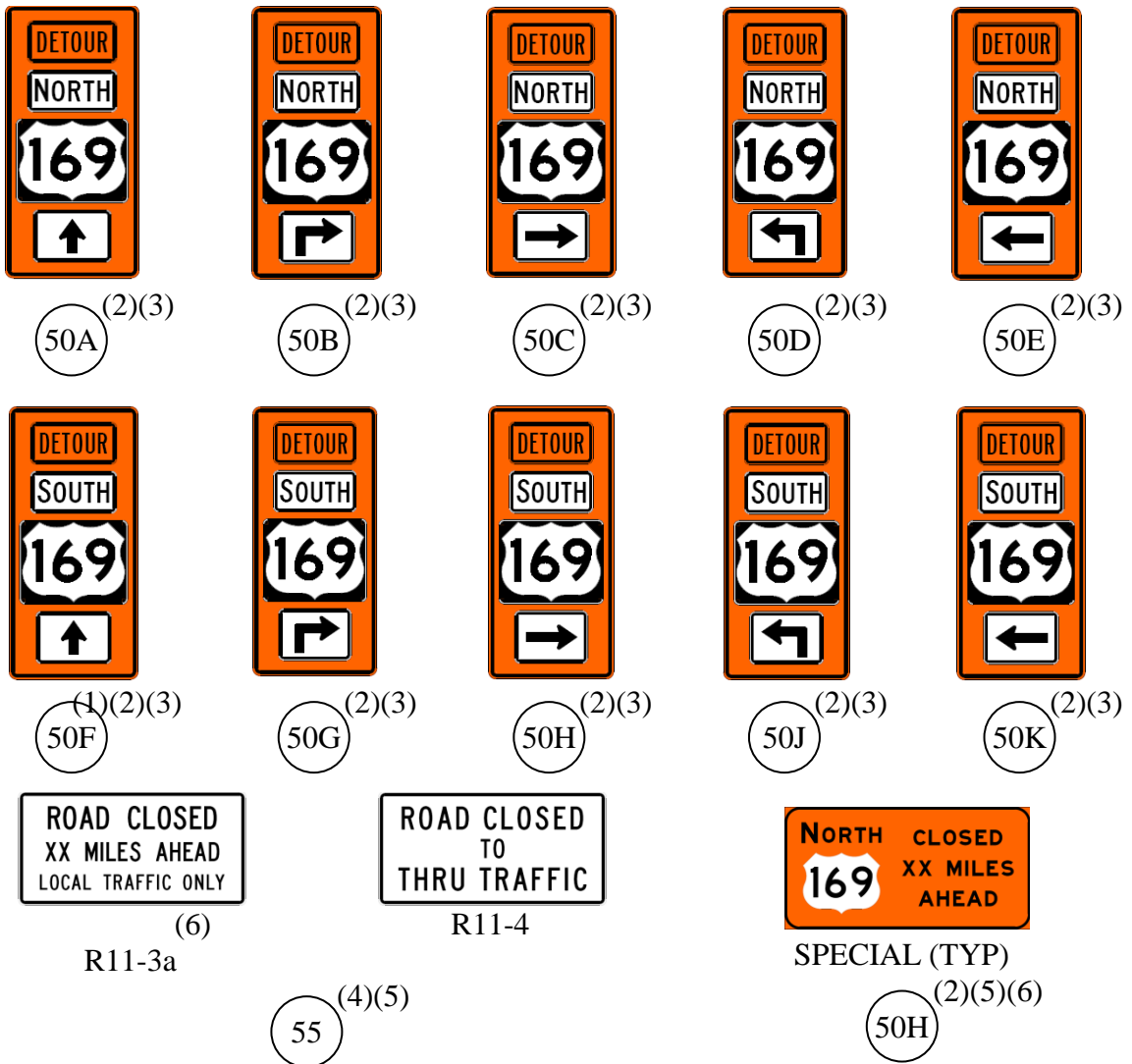


616.8.9 (TA-9) Road Closed Beyond Junction Detour - DE/CM - MT



Signs and Notes
Detour



NOTES:

SEE FIGURE 616.1.2 FOR SIGN SPACING.

PCMS MAY BE USED IN ADDITION TO THIS SIGNING.

- (1) IN ADDITION TO THE LOCATIONS SHOWN, CONFIRMATION SIGNS SHOULD ALSO BE USED ALONG EXTENDED SECTIONS ON THE SAME ROUTE.
- (2) SIGNS TO BE DESIGNED BY TRAFFIC DIVISION. SIGNS TO BE SHOWN ON THE PLANS AND LISTED UNDER "MISCELLANEOUS SIGNS" ON THE D-2BS SHEET. QUANTITIES SHALL BE BASED ON THE LARGEST SIGN DIMENSION.
- (3) REPLACE "DETOUR" WITH "ALTERNATE" FOR ALTERNATE ROUTE SIGNING.
- (4) USE R11-3a IN RURAL LOCATION AND R11-4 IN URBAN LOCATIONS.
- (5) SIGN NOT USED IN ALTERNATE ROUTE SIGNING.
- (6) DISTANCE ONLY SHOWN IF 1 MILE OR MORE TO CLOSURE.

**Route Assembly Signs
Detour**



DETOUR ROUTE ASSEMBLY (NUMBERED ROUTE)
TO BE USED FOR DETOURING OF INTERSTATE, US, AND MISSOURI
NUMBERED ROUTES.



DETOUR ROUTE ASSEMBLY (LETTERED ROUTE)
TO BE USED FOR DETOURING OF MISSOURI LETTERED ROUTES.



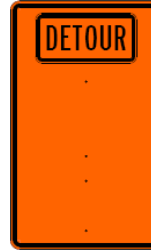
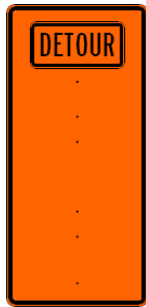
DETOUR ROUTE ASSEMBLY (LOCAL ROAD)
TO BE USED FOR DETOURING OF OFF-SYSTEM STREETS AND ROADS.

NOTES:

REPLACE "DETOUR" WITH "ALTERNATE" FOR ALTERNATE ROUTE SIGNING.
DETOUR ROUTE ASSEMBLIES WITH APPROPRIATE CARDINAL DIRECTIONS,
ROUTE SHIELDS, AND DIRECTIONAL ARROWS TO BE DESIGNED BY TRAFFIC
DIVISION.

SIGNS TO BE SHOWN ON THE PLANS AND QUANTIFIED ON THE D-2BS SHEET.

SHEETING APPLICATIONS FOR SIGN BLANKS



NOTES:

SIGNS MAY BE PRODUCED BY EITHER PROCESSES: APPROPRIATE CARDINAL DIRECTIONS, ROUTE SHIELDS, AND DIRECTIONAL ARROWS MAY BE SHEETED ON THE SIGN BLANK AS ONE HOMOGENOUS PRODUCT OR APPROPRIATE CARDINAL DIRECTIONS, ROUTE SHIELDS, AND DIRECTIONAL ARROWS PLATES MAY BE CONSTRUCTED AND MAY BE BOLTED ON THE DETOUR BLANK SIGNS.

THE SIGN DIMENSIONS ARE THE FOLLOWING:

NUMBERED ROUTE ASSEMBLY – 36” X 78”

LETTERED ROUTE ASSEMBLY - 36” X 60”