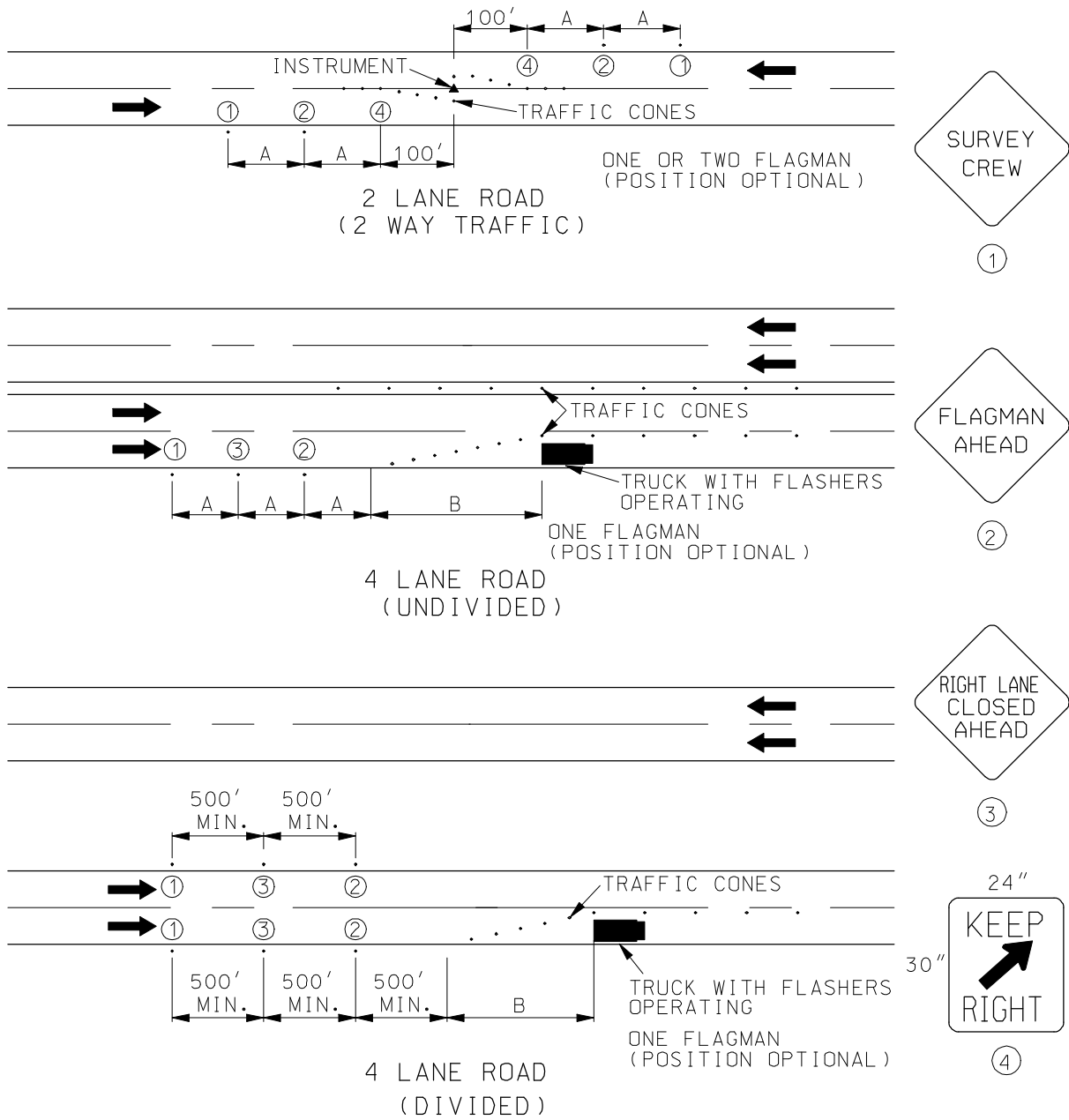


Traffic Safety-Equipment & Procedures



A = 200' MIN URBAN
 A = 500' MIN RURAL
 B = SPEED * LANE WIDTH

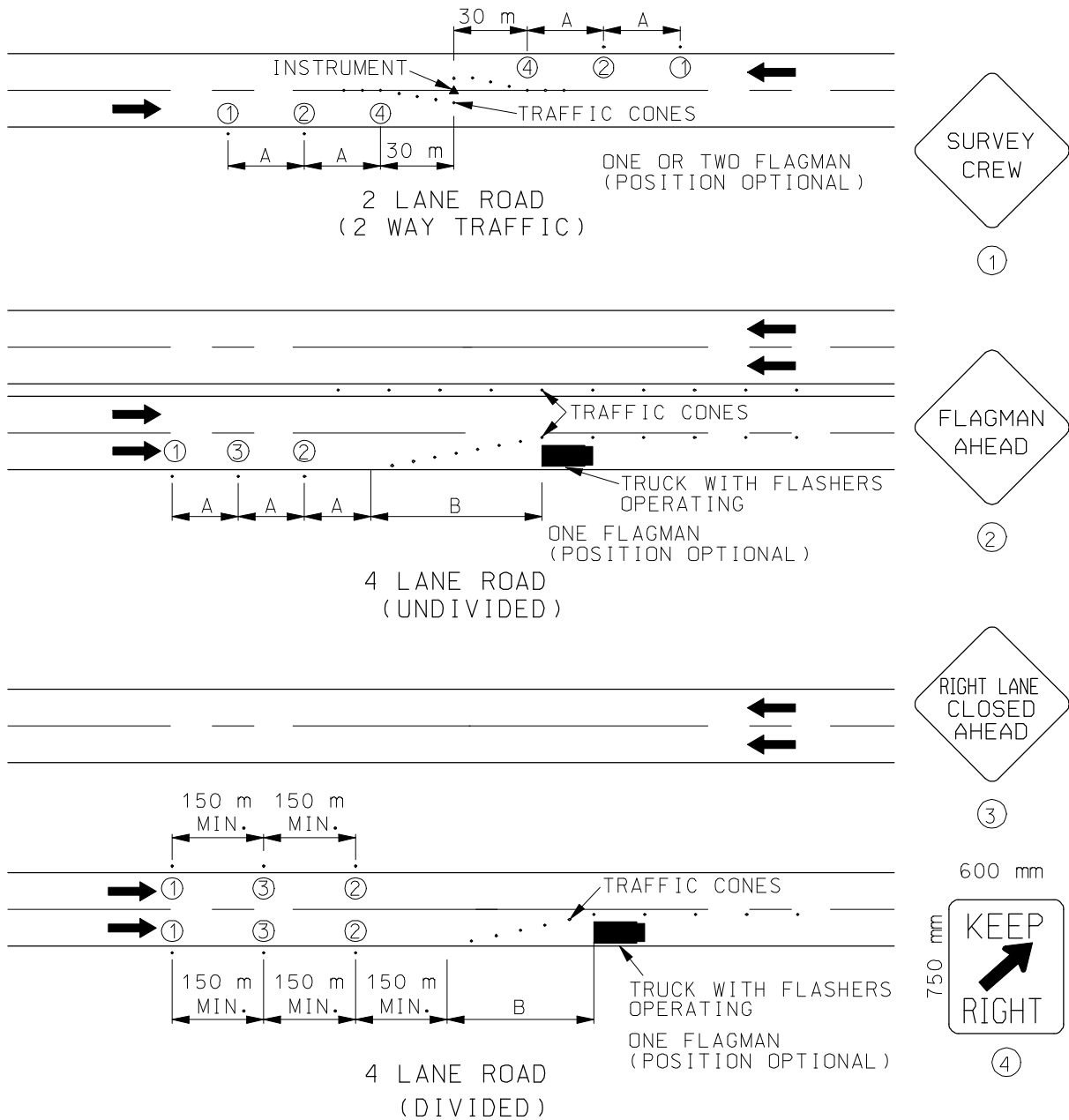
NOTE:

USE 28" TRAFFIC CONES SPACED AS NEEDED.

BOTTOM OF MOUNTED SIGNS SHOULD BE A MINIMUM OF 12" ABOVE THE ROAD SURFACE ELEVATION.

Figure 1

Traffic Safety-Equipment & Procedures



A = 60 m MIN URBAN
 A = 150 m MIN RURAL
 B = 0.6 * SPEED (km/h) * LANE WIDTH (meters)

NOTE:
 USE 700 mm TRAFFIC CONES
 SPACED AS NEEDED.
 BOTTOM OF MOUNTED SIGNS SHOULD
 BE A MINIMUM OF 300 mm ABOVE
 THE ROAD SURFACE ELEVATION.

Figure 1